

## CAMSHAFT

## Removal and Installation

SMA for models without PHASE marking

PFP:13001

EBS0175L

A

EM

C

D

E

F

G

H

I

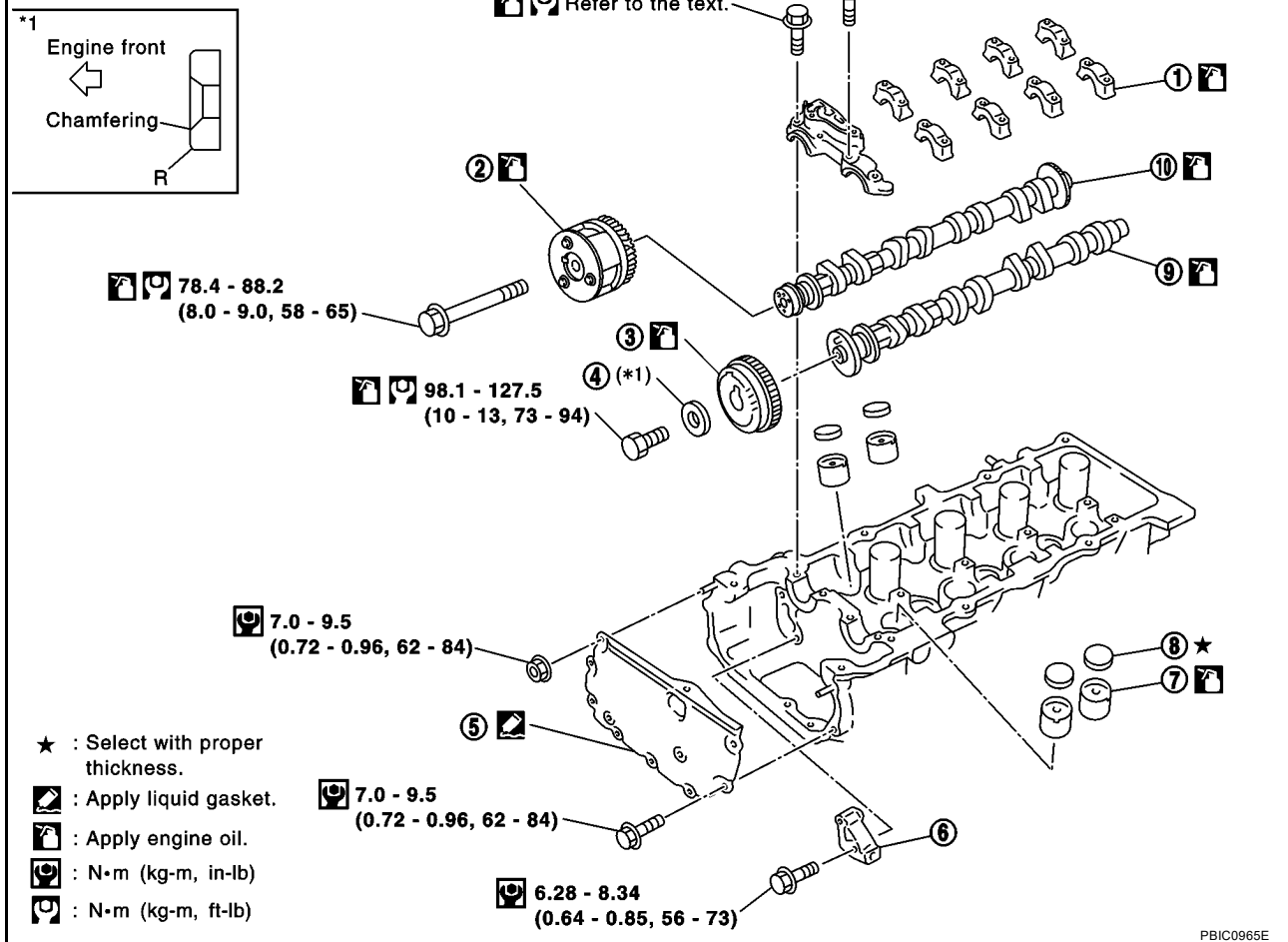
J

K

L

M

## SEC. 111•130•221

**CAUTION:**

Prior to installation, apply engine oil to the parts marked in the figure.

**REMOVAL**

1. Remove rocker cover. Refer to [EM-36, "ROCKER COVER"](#).
2. Remove cylinder head front cover.
  - Move harness secured to front surface beforehand.
3. Set No. 1 cylinder at TDC of its compression stroke.
  - a. Remove RH splash cover (integrated with undercover).
  - b. Rotate crankshaft pulley clockwise and align yellow paint mark with timing indicator.

